


# PVR

## Introducing PVR

PVR (Personal Video Recorder), allows you to record programs without the need of tapes or discs, as well as pause live TV.

**Note: If your set top box does not support recording, please contact customer service for an upgrade.**

## Quick Recording

The fastest and easiest way to begin recording is to use the **Record**  button on your remote control.



### Step 1: Start Recording

While watching a program, press

**Record** 

Recording will begin immediately, and the InfoBar will appear with a red Record icon next to the **Live TV** indicator.



You can also start a quick record in Guide.

Highlight a program you want to record using the **direction buttons** and press

**Record** 

If the program is currently on, recording will begin immediately. If the program comes on in the future, your system will record the

program for you automatically. Your TV can even be turned off and recording will take place (but your set top box must stay on).

# PVR

## Pause Live TV (PLT)

Recording capability also allows you to pause live TV (PLT), meaning a channel that you are currently watching. This can allow you to walk away from your TV and then return without missing anything. You can fast forward from the point where you paused to the point where you catch up with live TV.

While watching a channel, PLT will temporarily store what you have watched so you can rewind to when you started watching that channel. Changing channels will clear anything you have been watching and will replace it with the new channel you are now watching.

The PLT bar appears whenever you pause, rewind, or fast forward live TV.



The center area displays a green bar to indicate the amount of TV you can rewind or fast forward through. The green arrows show where you are within that range.

The far left box indicates the current playback function (pause, play, etc.).

The far right box indicates the current time.

## Controlling Recorded or Live TV

While watching a recorded program or live TV, you can use the Playback Control buttons to pause, rewind, fast forward, or stop playback.



Press **Pause** to halt playback at the current point.



Press **Rewind** or **Fast Forward** to reverse or advance playback from the current point.



Press **Play** to resume watching at normal speed.



Press **Stop** to exit playback of the program.

# PVR

## PVR Playback Controller



Any time you press one of the Playback Control buttons while watching a previously recorded program, the PVR playback controller is displayed.

The box to the left indicates the playback function in use.

The bar in the middle gives a visual representation of where you are in the recording.

The lighter section indicates how much of the recording has been played.

## The PVR Menu

The PVR item on the Menubar provides access to previously recorded programs, upcoming recordings, prioritize series recordings, schedules an event, and view your recording history.

### Go To PVR

Press Menu, highlight PVR, and press OK.

## The PVR Menu Quick Reference

### Recordings

**Recordings** lists programs you have already recorded. Go here to watch, lock, or delete these recorded programs.

### To Record

**To Record** lists all Recording events you have scheduled, and allows you to cancel any future recording events.

### Schedule Priority

**Schedule Priority** allows you to give priority for one series recording over another in the event of a scheduling conflict.

### Schedule Event

**Schedule Event** allows you to create a recording, reminder or auto tune event for individual or recurring programs.

### Record History

**Record History** is a log of when recordings start, complete, or are cancelled.

# PVR

## Go To Recordings



Highlight **Recordings** and press **OK**.

A list of your recorded programs appears to the right.

Recordings you have not yet watched are listed with white text; those you have are listed with grey text. If a program is still being recorded, a red dot icon will appear to the left of the program's name.

## Sort Recordings

You can sort your recordings alphabetically by title, by the date recorded, by channel that originally aired the program, or by whether you have or have not viewed the recording.



To sort your recordings by any of those categories, press the left arrow button to shift the highlight to the left. Highlight the category you want to use to sort and press **OK**. For example, if you highlight **Date** and press **OK**, your recordings will be sorted by the date recorded with the oldest at the top and the newest at the bottom.

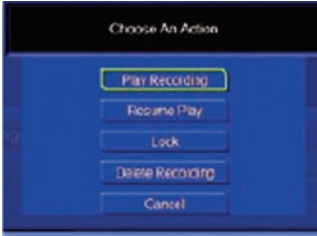
You can reverse the sort order for any category by pressing **OK** again on that category. Using the above example, pressing **OK** again on **Date** would put your newest recordings at the top and the oldest at the bottom.

## Watch A Recorded Program

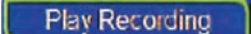
---

### Step 1: Pick A Recording

Highlight the recording you want to watch and press **OK**.



### Step 2: Play The Recording

Highlight  and press **OK**.


### Step 3: Watch The Recording

You will exit to your recordings as it begins playing. The Infobar will appear for a few seconds with a green icon to the right to indicate you are playing a recording.

While watching your recording, you can use any of the Playback Control buttons on your remote just as you would if watching a videotape or DVD.

### Step 4: Return To Live TV

When the recording ends, you will be returned to live TV.

If you want to return to live TV before your recording has ended, press **Stop**. 

## Lock or Unlock A Recording

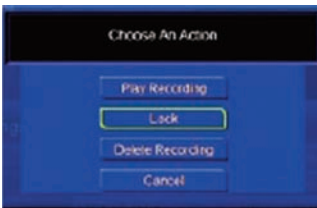
---

Locking a recording prevents the system from deleting a program to make space for new recordings.

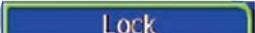
**Note: You can still manually delete a locked recording. Locking only prevents the system from automatically deleting it.**

### Step 1: Pick A Recording

Highlight the recording you want to lock and press **OK**.



### Step 2: Play The Recording

Highlight  and press **OK**.

Once a program is locked, a  appears on the recording's listing.

# PVR

## Step 2: Unlock the Recording

If you select a locked program in Step 1, the lock option will instead be Unlock.

Highlight **Unlock** and press **OK**.

When the program is unlocked, the padlock icon is removed.

## Delete A Recording

---

### Step 1: Pick A Recording

Highlight the recording you want to delete and press **OK**.

### Step 2: Delete the Recording



Highlight **Delete Recording** and press **OK**.

### Step 3: Confirm Delete

Highlight **Yes** and press **OK** to confirm, or No if you change your mind.

### Step 4: Recording Deleted

Once you confirm the deletion, the entry for that recording is removed from the list

**Note: Once a recording has been deleted, there is no way to get it back. Please take care when deleting recordings.**

## Preview Programs To Record

---

You can easily review and cancel programs to be recorded.

## Go To Record

---

Highlight **To Record** and press **OK**.

A list of your scheduled future recordings will appear to the right.

The list of programs to be recorded can be sorted by title, date to be recorded, channel airing the program to be recorded, or recordings to be skipped or not.

For more information on sorting items in this list, see Sort Recordings earlier in this section.

## Cancel A Recording Event

### Step 1: Pick A Recording Event

Highlight the recording event you want to cancel and press **OK**.

### Step 2: Pick A Recording Event

Highlight **Cancel Recording** and press **OK**.

### Step 3: Pick A Recording Event

Once you have canceled the recording event, the entry for that recording event is removed from the list.

## Schedule Priority

When you create series recordings for different programs it is possible that at some point there will be a conflict where two or more different programs come on at the same time. Schedule Priority allows you to pre-determine what program you want to be recorded compared to another.

### Go To Schedule Priority

Highlight **Schedule Priority** and press **OK**.

### Change Schedule Priority



Schedule Priority lists all series recordings you have scheduled. The series with the highest priority is listed first. This program will always be recorded in preference to any other series recording.

The series with the lowest priority is listed last. This program will be skipped in preference to any other series recording.

To adjust the priority for a series, highlight the program you want to change and press **OK**.

You will be presented with the option to **Move Up or Move Down** the program in priority. Highlight the option you want and press **OK**. If necessary, repeat this procedure until each series is in the order of priority you want.

# PVR

## Schedule An Event

You can schedule a recording, reminder, or auto tune an event in exactly the same way as you would when choosing Schedule Event from the Guide.

## Go To Schedule Event

Highlight **Schedule Event** and press **OK**.

## Schedule An Event



Once you choose Schedule Event, the Schedule Event window Appears.

Highlight the setting you want to change and press **OK**.

Use the **up and down direction buttons** to change the setting.

Press **OK** to enter your change.

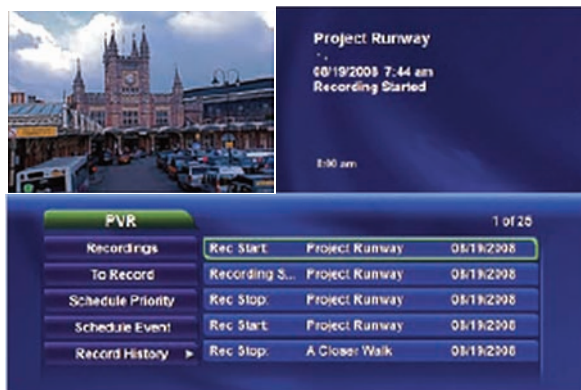
## Your Recording History

Record history is a log of events related to recordings, including recording started, recording completed, and cancellation of a recording event.

## Go To Record History

Highlight **Record History** and press **OK**.

## Review Record History



Press the **up and down direction buttons** on the remote to scroll through your record history.